



## In This Issue:

**BERARD**  
SINCE  
1945  
The Mega Transport Experts

- > Challenge Accepted | The E-Crane Project
- > On The Road | Night Move In The Big Easy
- > Showtime! | Berard @ Workboat New Orleans
- > Showtime! | Berard @ ABCC Miami

# Challenge Accepted The E-Crane Project



## Job Specs

### Weights:

Cranes: 589 Tons  
Hoppers: 476 Tons

### Dimensions:

Cranes:  
57'L x 56'W x 95'H

Hoppers:  
64'L x 48'W x 51'H

### Equipment Used:

28 axle lines of SPMTs,  
2 power packs, beams,  
crane mats, stands,  
barge ramps & winch  
trucks

Challenges. We face them everyday and on every job. Our mission is to be proactive and plan for the obstacles that come our way and overcome them. The Berard team faced the difficult task of loading out two bulk material E-Cranes and two bulk material hoppers in Corpus Christi, Texas and transport them via barge to the Port of West St. Mary in south central Louisiana. What would be a normal load out was made more challenging due to the fact that the cargo was situated on a narrow pier/rail system with very limited space. The team also contended with high winds that persisted throughout the majority of the load out process.

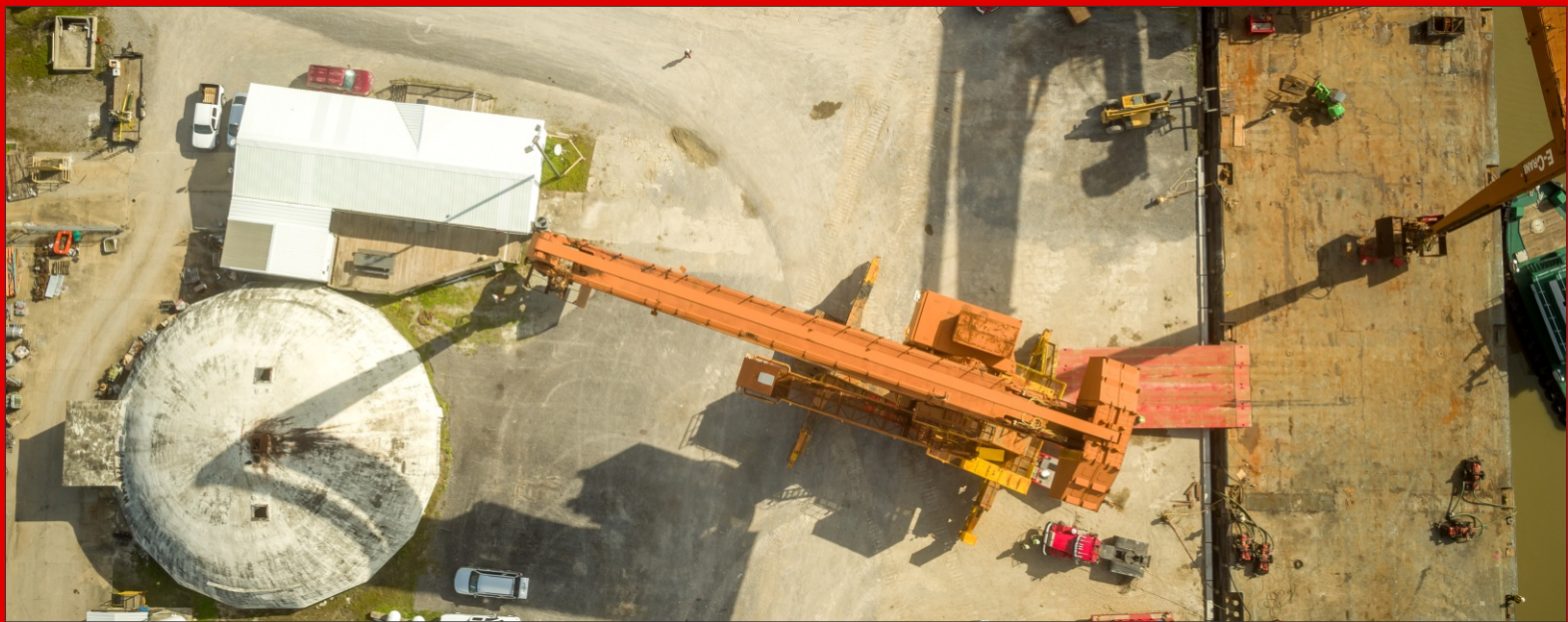
Berard engineering and project management teams designed a load out plan so that all of the cargo could be placed onto one deck barge, thus minimizing costs to the client. The team began the project by performing a normal bow/stearn end load operation for the two E-Cranes. The barge was then turned parallel to the pier allowing the hoppers to be loaded transversely. Once securely sea fastened, the cargo began its trip to Louisiana. The offload site gave the team a little more working room but more challenges arose due to a congested yard. All of the cargo was offloaded transversely due to the narrow waterway making a normal bow/stern offload impossible. The two hoppers were offloaded first, then the two E-Cranes were rolled to the ramp location then carouesled in place 90 degrees while still on the barge to orient for the roll off position. Slowly and steadily the cranes were rolled off right into another challenge of the cargo having to navigate around buildings in the yard. The cargo then traversed through the yard to the storage location.

We would like to thank our awesome team who worked tirelessly to overcome the challenges that came our way. Our team is the best anywhere and we're proud of them and their commitment to making Berard what it is.









# On The Road Night Move In The Big Easy



## Job Specs

**Weight:**  
286,601 lbs.

**Dimensions:**  
34'-10"L x 14'-4"W x 17'-7"H

**Equipment Used:**  
Faymonville 10 line DualMAX  
trailer & Kenworth C500  
prime mover

A worldwide shipment of a critical process component required routing from the Port of New Orleans, LA to a local refinery, and Berard got the call. The Port of New Orleans was the closest import terminal for the shipment at only about 30 miles. However, the downtown located terminal created many challenges for delivery. Berard researched a feasible route, which included crossing a roadway median in a congested area of the city. The plan was approved by New Orleans city officials, New Orleans Police Department, and Berard's client. In one evening the load was moved through the crowded city streets of New Orleans to the destination for offloading the following day. Berard utilized a Faymonville 10 line DualMAX trailer pulled by a Kenworth C500 prime mover, which was easily approved by LA DOTD for the route. The compact trailer design allowed the load to remain on the trailer deck directly to the crane hook, maneuvering tight turns not only through New Orleans but also within the confines of the refinery.







# Showtime! Berard @ Workboat New Orleans



INTERNATIONAL  
**WORKBOAT**  
SHOW

DECEMBER 4-6 | NEW ORLEANS, LA

BOOTH  
**1211**

The Berard team will be exhibiting at the International Workboat Show on December 4-6 at the Ernest Morial Convention Center in New Orleans. The show brings many shipbuilders and industry suppliers together under one roof and the Berard team will be there to highlight the many services we provide to the shipbuilding industry. See us at booth 1211 and meet the sales & marketing team to learn all about our great company!  
See you in the Big Easy!

# Showtime! Berard @ ABCC Miami

Following the Workboat show, the team will be heading to sunny Florida to exhibit at the Accelerated Bridge Construction Conference in Miami. Stop by and see the team and learn about our infrastructure projects and our great company!

## INTERNATIONAL ACCELERATED BRIDGE CONSTRUCTION CONFERENCE:

Including Automation, Service Life and Ultra High Performance Concrete (UHPC)



December 11-13, 2019  
Miami, FL

FIU Engineering & Computing ABC UTC

## > Birthdays @ Berard

# Happy Birthday!

## Happy Birthday to These Dedicated Team Members!

Amanda Hebert  
Raven Naquin  
Jacob Rogers  
Blake Arceneaux